

# Infrastructure, climate change and social value

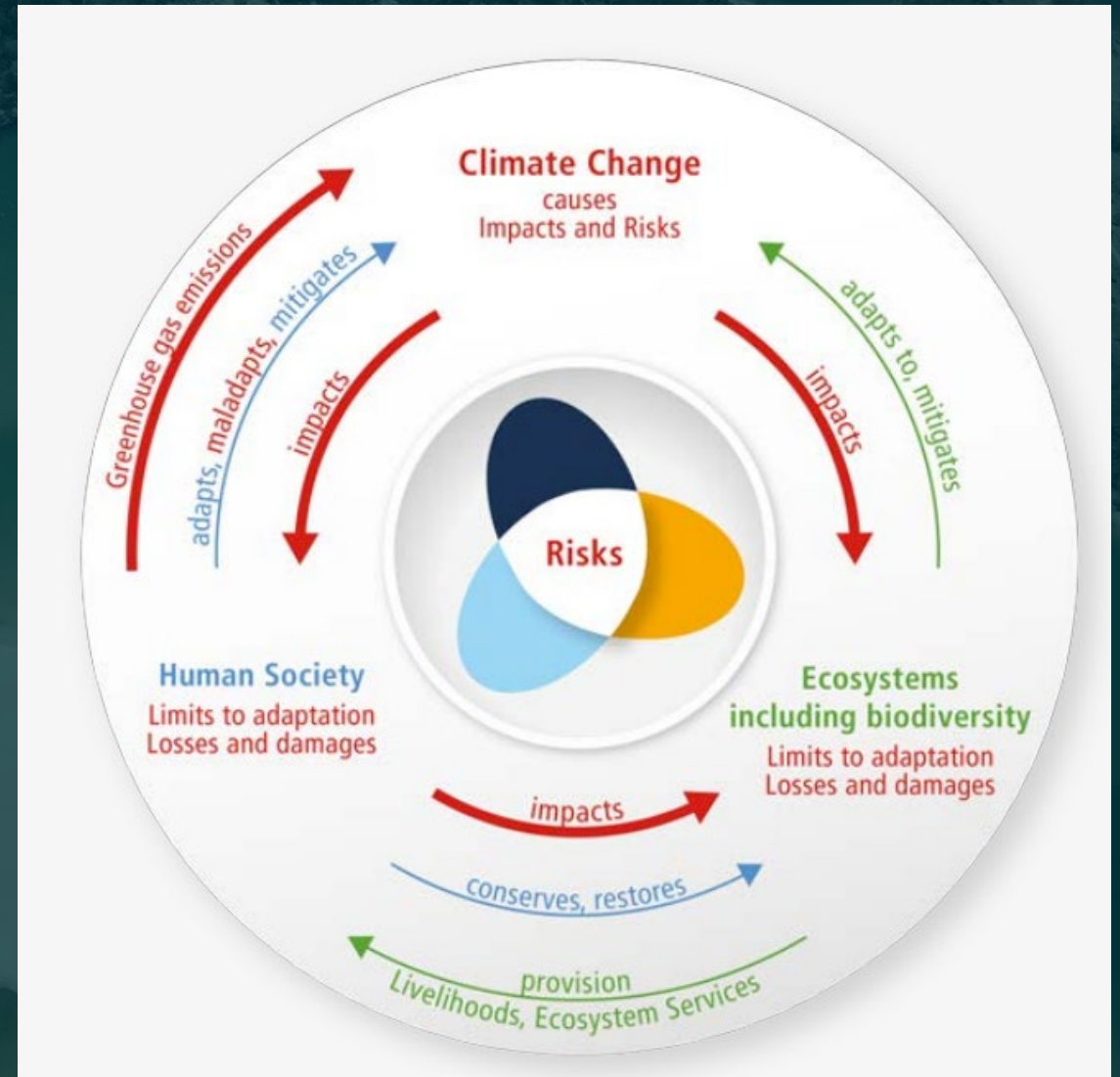
Natasha Issa  
September 2022

# Overview

- 1 Why does infrastructure play a critical role in climate change and social value?
- 2 What role does infrastructure play?
- 3 How do we embed climate change and social value into infrastructure?

# Why?

- Around 70% of Australia's carbon emissions are associated with infrastructure projects
- Concrete is the most widely used material on earth, second only to water
- Cement accounts for 8% of the world's global carbon emissions
- Extreme weather will continue to become more frequent and severe



# What?

## Transport

- Mode shift
- Electrification
- Land use planning
- Materials – concrete and steel



[United Airlines, Jeremy Segrott  
CC BY 2.0, Andreas160578/Pixabay]

# What?



## Cities and urban areas

- Green spaces – carbon uptake and storage
- Enable electrification
- Local living

[Pelargoniums for Europe/Unsplash, City of St Pete CC BY-ND 2.0, Victor/Unsplash, EThekwin Municipality, Arne Mueseler/arne-mueseler.com, CC BY-SA 3.0 de]



# What?



## Buildings

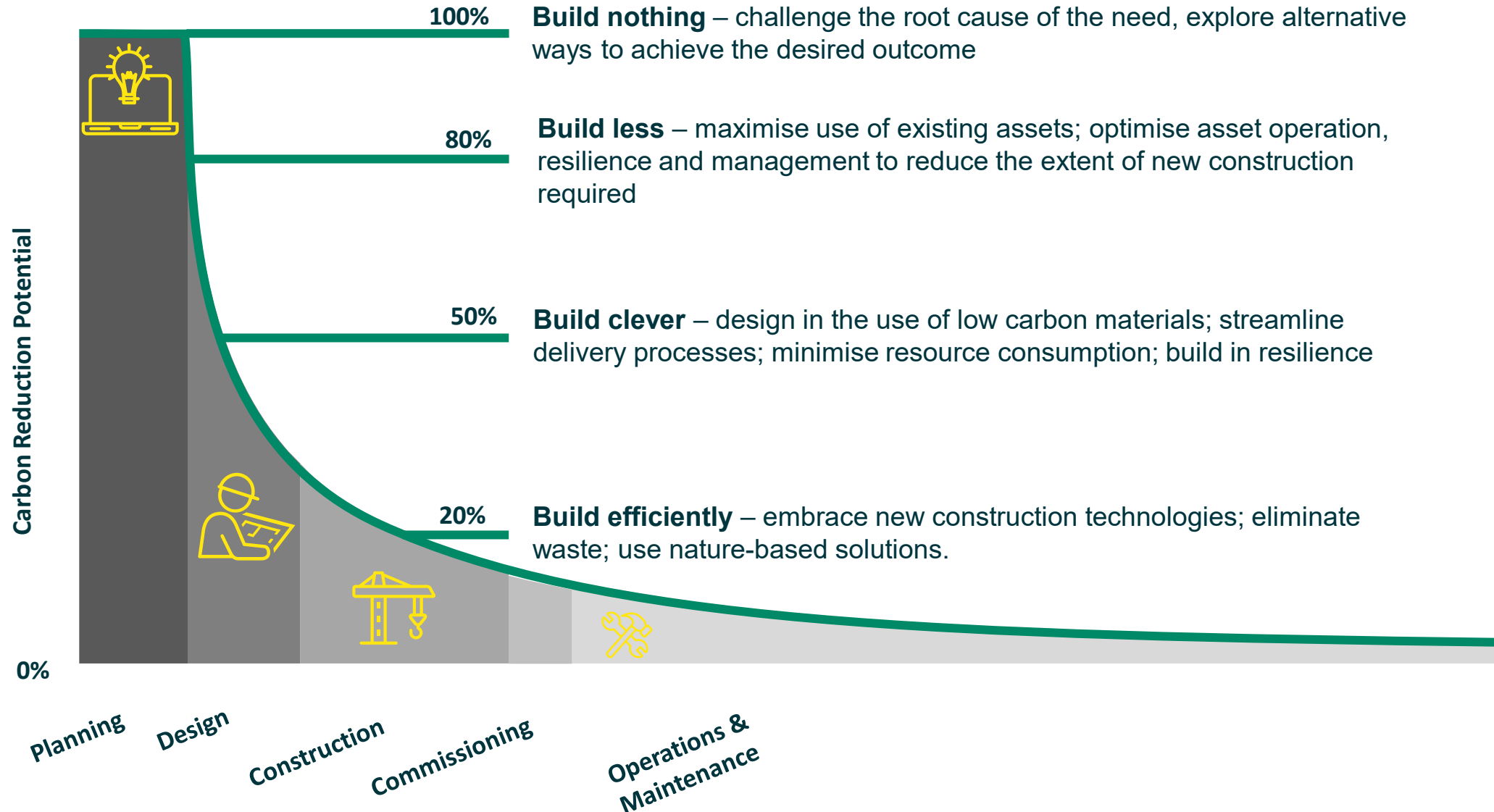
- Net zero emissions by 2050 – zero energy and zero carbon buildings
- Retrofit existing buildings
- Materials – concrete and steel

[Pelargoniums for Europe/Unsplash, City of St Pete CC BY-ND 2.0, Victor/Unsplash, EThekwin Municipality, Arne Mueseler/arne-mueseler.com, CC BY-SA 3.0 de]



# How? Listen, engage and learn from local and First Nations communities!

100%



# How?

- Sustainability is an outcome not a discipline – integration, leadership and culture
- Make sustainability the default option
- Think and act for now and the future
- Understand and respond to the interdependencies between social, environmental and economic impacts



**AECOM** Delivering a  
better world